

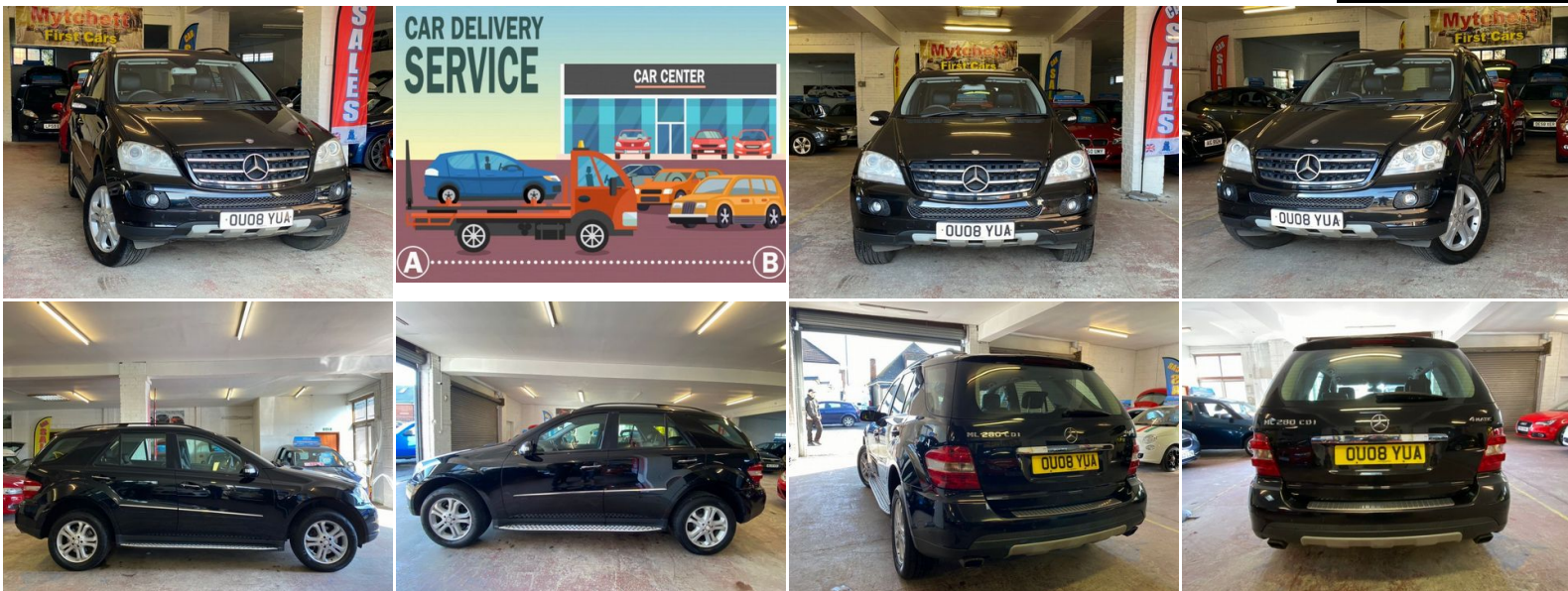


## Mercedes-Benz M Class

3.0 ML280 CDI SE 5dr

++ EXCELLENT CONDITION++

**SOLD**



2008



DIESEL



AUTOMATIC



BLACK



95,000 MILES



2,987CC

### DESCRIPTION

EXCELLENT CONDITION INSIDE AND OUT SMOOTH ENGINE AND GEARBOX FULL SERVICE HISTORY NEW MOT JUST DONE TWO KEYS LOW RATE FINANCE AVAILABLE WITH ZERO DEPOSIT OPTION ALL OUR CARS ARE IN A INDOOR SHOWROOM FIRST TO SEE WILL BUY, NATIONWIDE DELIVERY.

### SOME FEATURES

- ✓ Adjustable Steering Column/Wheel
- ✓ Air Bag Driver
- ✓ Air Bag Passenger
- ✓ Air Bag Side
- ✓ Alarm
- ✓ Alloy Wheels (17in)
- ✓ Anti-Lock Brakes
- ✓ Armrest
- ✓ Body Coloured Bumpers
- ✓ Central Door Locking
- ✓ Centre Rear Seat Belt
- ✓ Climate Control
- ✓ Computer (Driver Information System)
- ✓ Cruise Control
- ✓ Cup Holder
- ✓ Electric Windows (Front/Rear)
- ✓ Electronic Stability Programme
- ✓ Head Air Bags
- ✓ Head Restraints
- ✓ Immobiliser
- ✓ In Car Entertainment (Radio/CD)
- ✓ Metallic Paint
- ✓ Mirrors External (Electric Heated/Folding)
- ✓ Paint Metallic
- ✓ Power Socket
- ✓ Power-Assisted Steering
- ✓ Roof Rails
- ✓ Seat - ISOFIX Anchorage Point (Two Seats - Rear)
- ✓ Seat Belt Pre-Tensioners
- ✓ Spare Wheel (Space Saver)
- ✓ Speakers
- ✓ Steering Wheel Leather
- ✓ Third Brake Light
- ✓ Tinted Glass
- ✓ Traction Control System
- ✓ Tyre Pressure Control
- ✓ Upholstery Leather
- ✓ Windscreen Wiper
- ✓ Wood Trim in Burr Walnut with Chrome Accents

Phev Ltd T/A Mytchett First Cars,

102 Mytchett Road, Mytchett, Camberley, Surrey, GU16 6ET

Tel: 01252 943610

<https://mytchettfirstcars.co.uk>

Despite our best efforts to present details accurately on our website, some variations, errors or omissions may occur. The information contained on this website does not constitute an offer for sale of any particular vehicle, accessory or specification.

Please contact us to confirm vehicle price, features & details before making any decision to purchase.